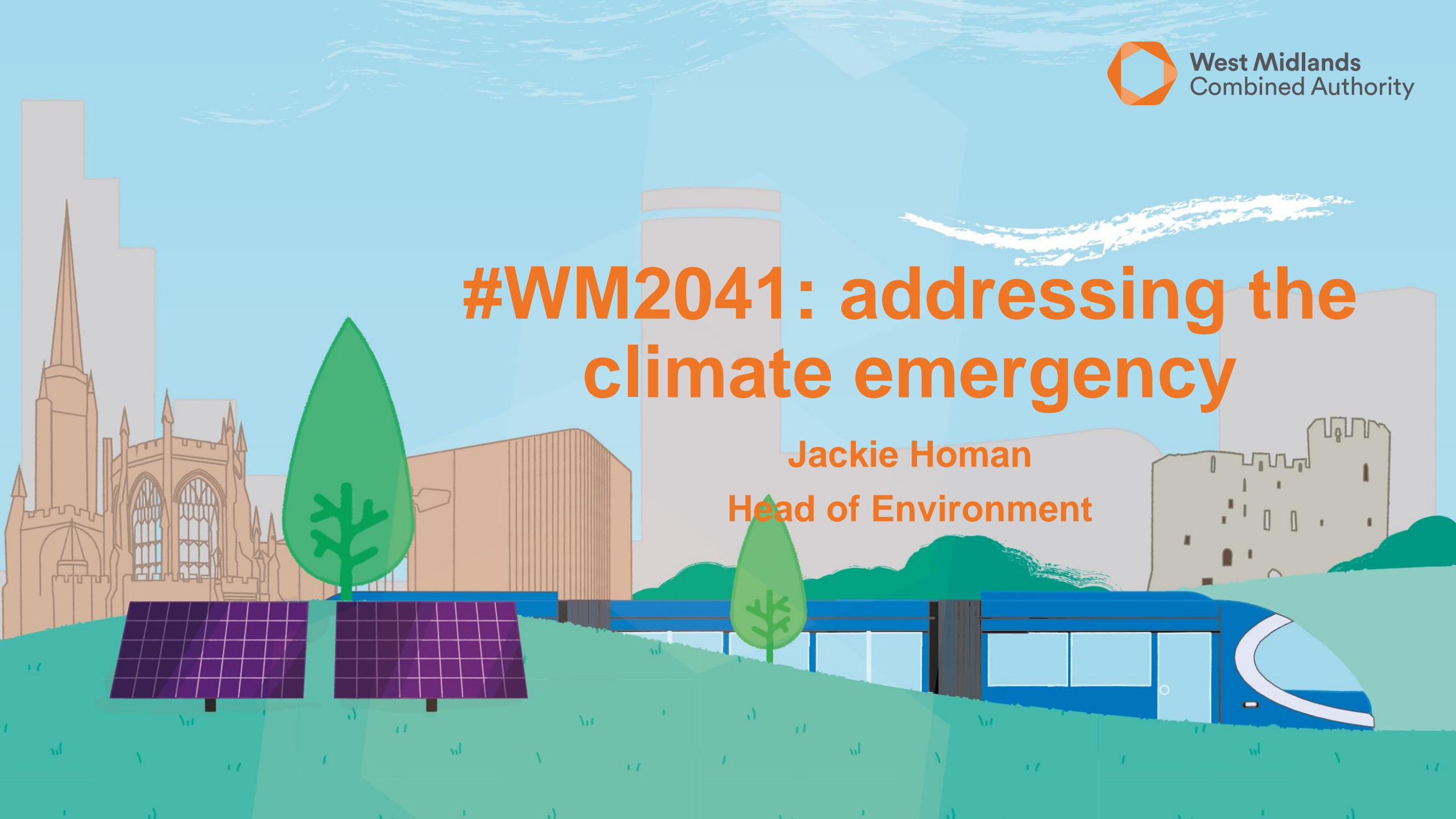


#WM2041: addressing the climate emergency

Jackie Homan
Head of Environment



 Met Office

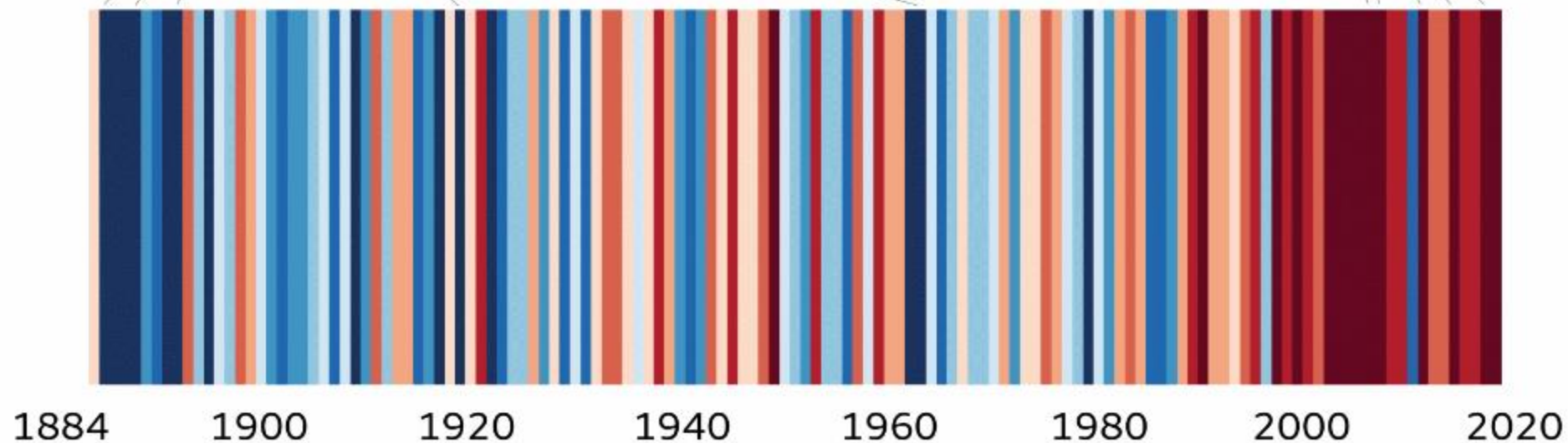
UK annual temperature

5 coolest years

1892, 1888, 1885, 1963, 1919

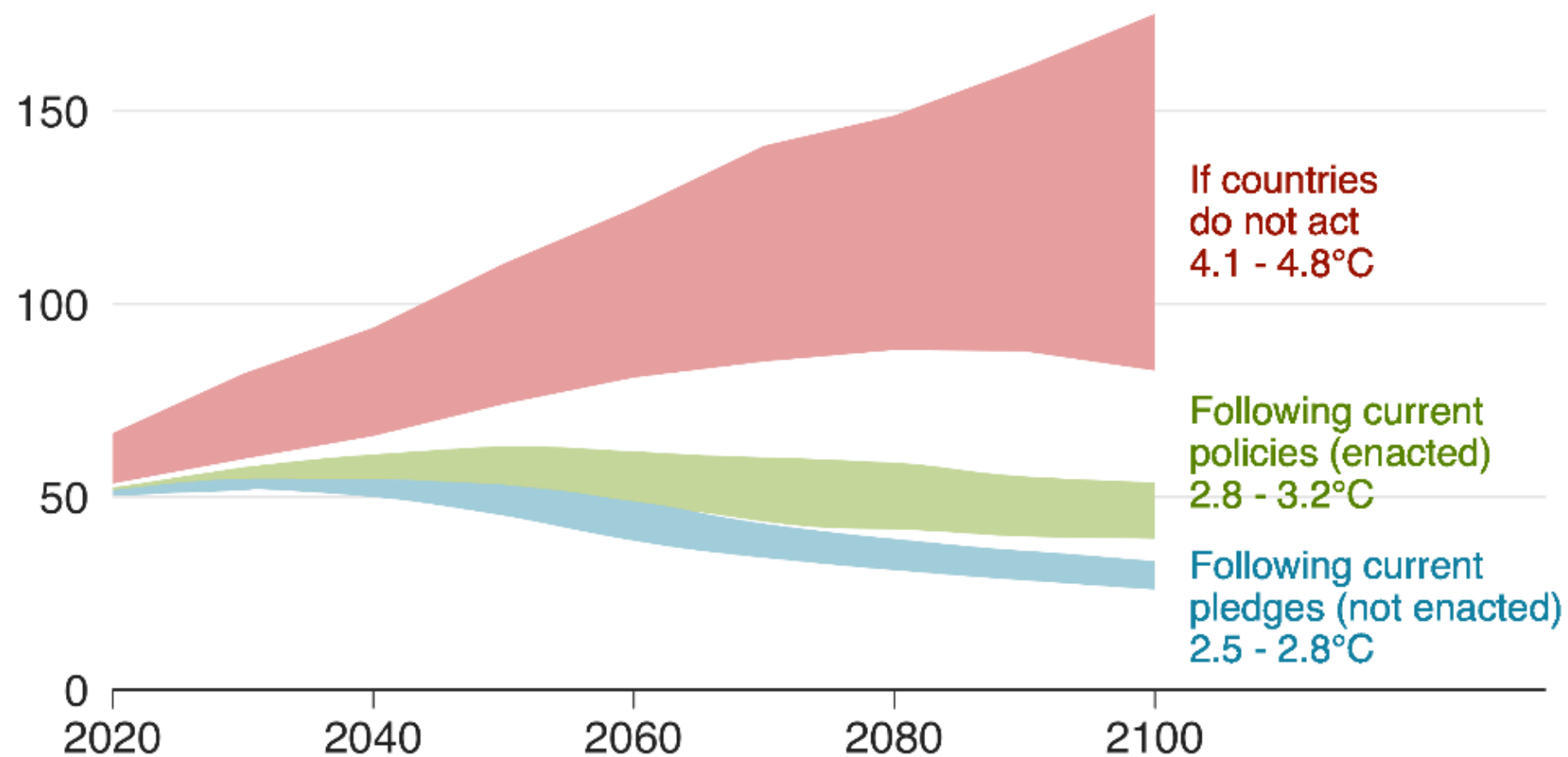
5 warmest years

2014, 2006, 2011, 2007, 2017



How much worse will the problem get?

Emissions* and expected warming by 2100





SUSTAINABLE DEVELOPMENT GOALS

17 GOALS TO TRANSFORM OUR WORLD



National context

Legislation and Policy

- Climate Change Act 2008
- Committee on Climate Change
- Environment Bill
- Plans for a Cabinet sub-committee on climate
- Action around specific issues – e.g. sales of petrol and diesel vehicles

The UK on the international stage

COP 26 GLASGOW



UNITED NATIONS
CLIMATE CHANGE
CONFERENCE

NOVEMBER 2020

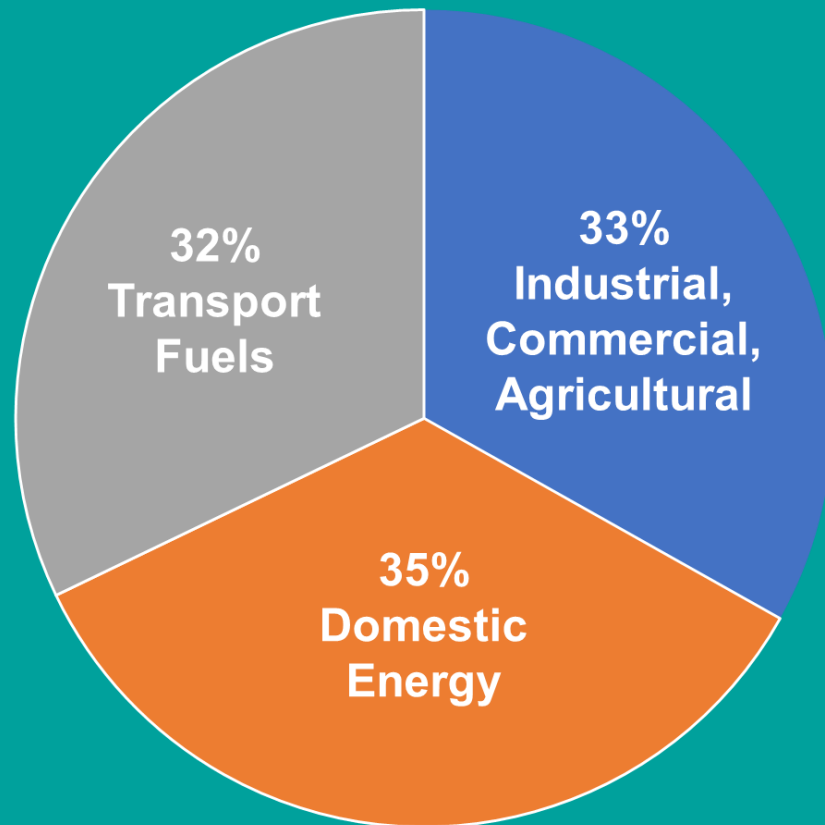


West Midlands
Combined Authority

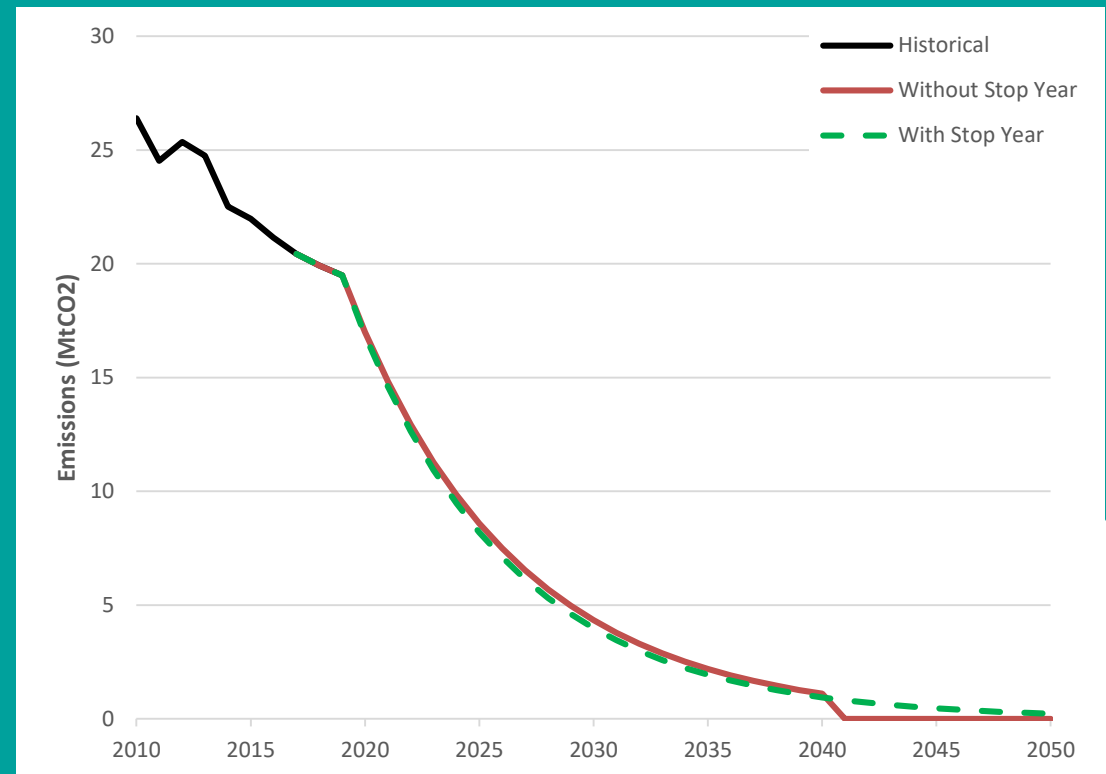


WMCA emissions and trajectory to zero

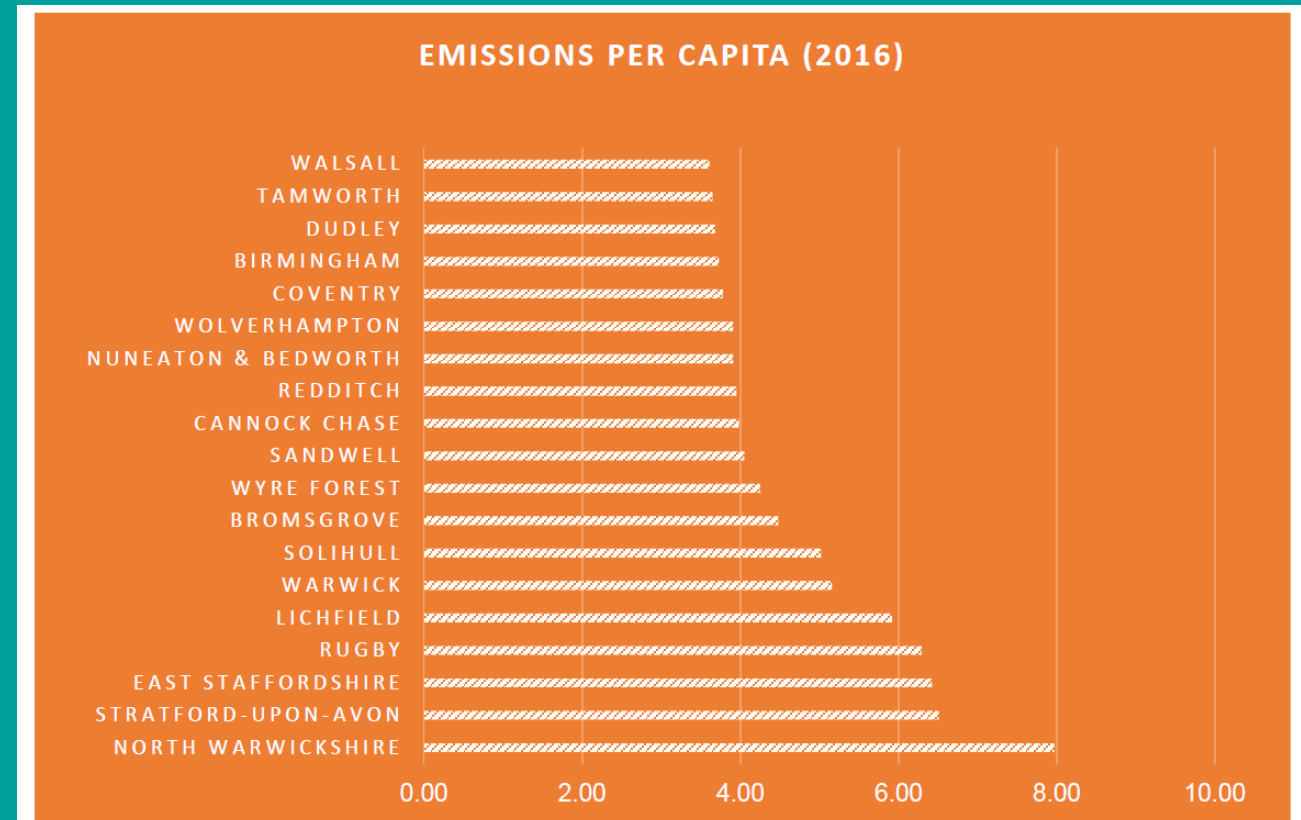
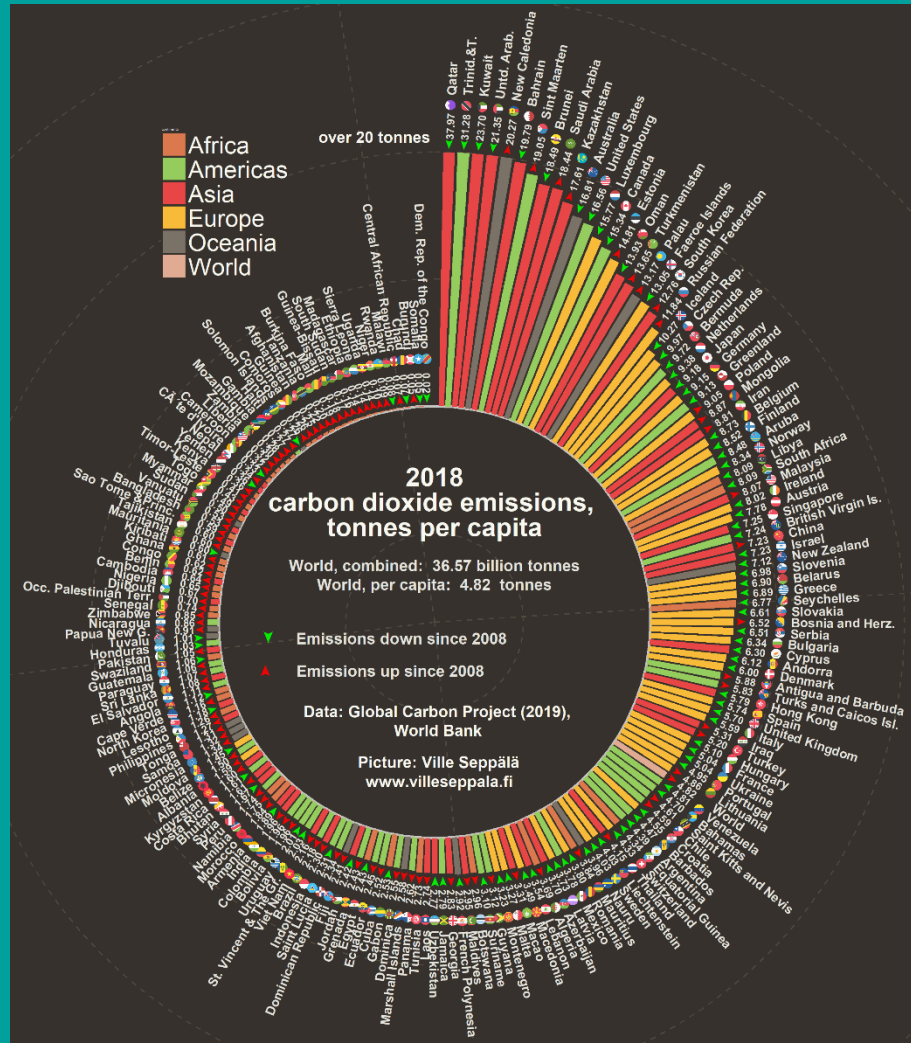
Our emissions by sector



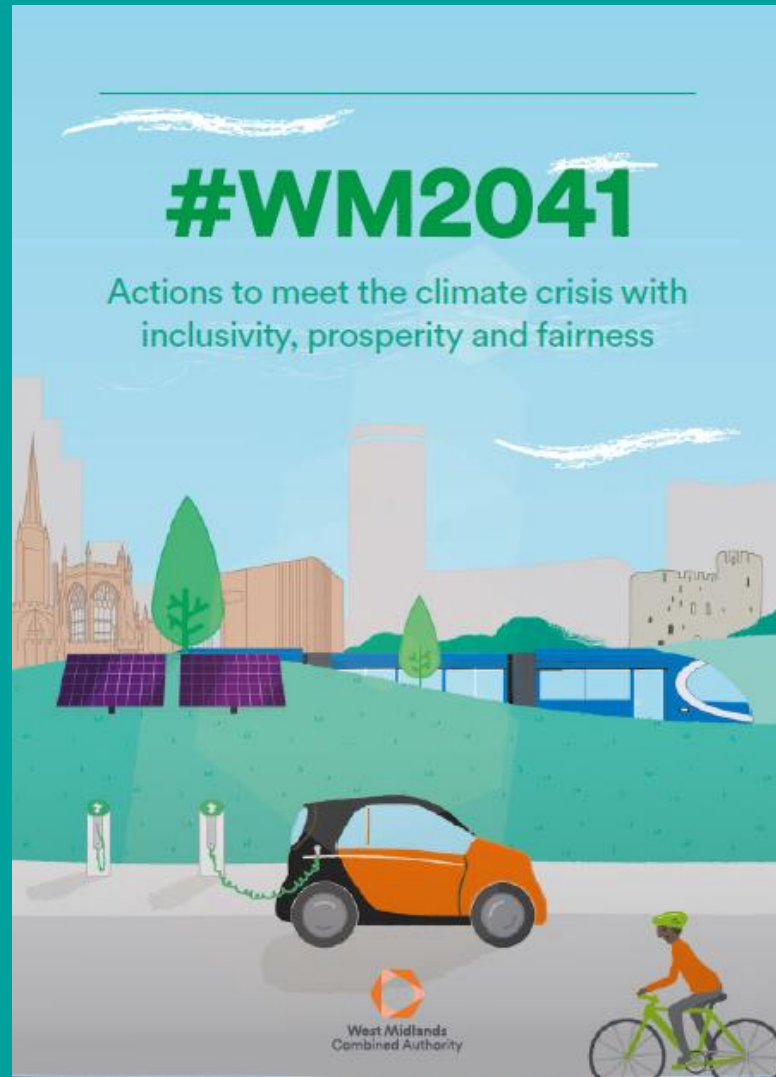
The pathway to zero



Emissions per capita



So what are WE doing?



#WM2041 – the action plan

- A plan to identify actions to take us to net zero carbon emissions by 2041
- Approved by the WMCA Board on 17th Jan
- Formal launch on 23rd Jan
- Out for consultation until 12th March
- Parallel engagement process being run with The Democratic Society



We will change our economy without leaving anyone behind



We will create places and connections that help us to meet the climate challenge

We will decouple prosperity from consumption of energy and resources



We will invest in the resilience of our places



We will use our industrial past to create a new future

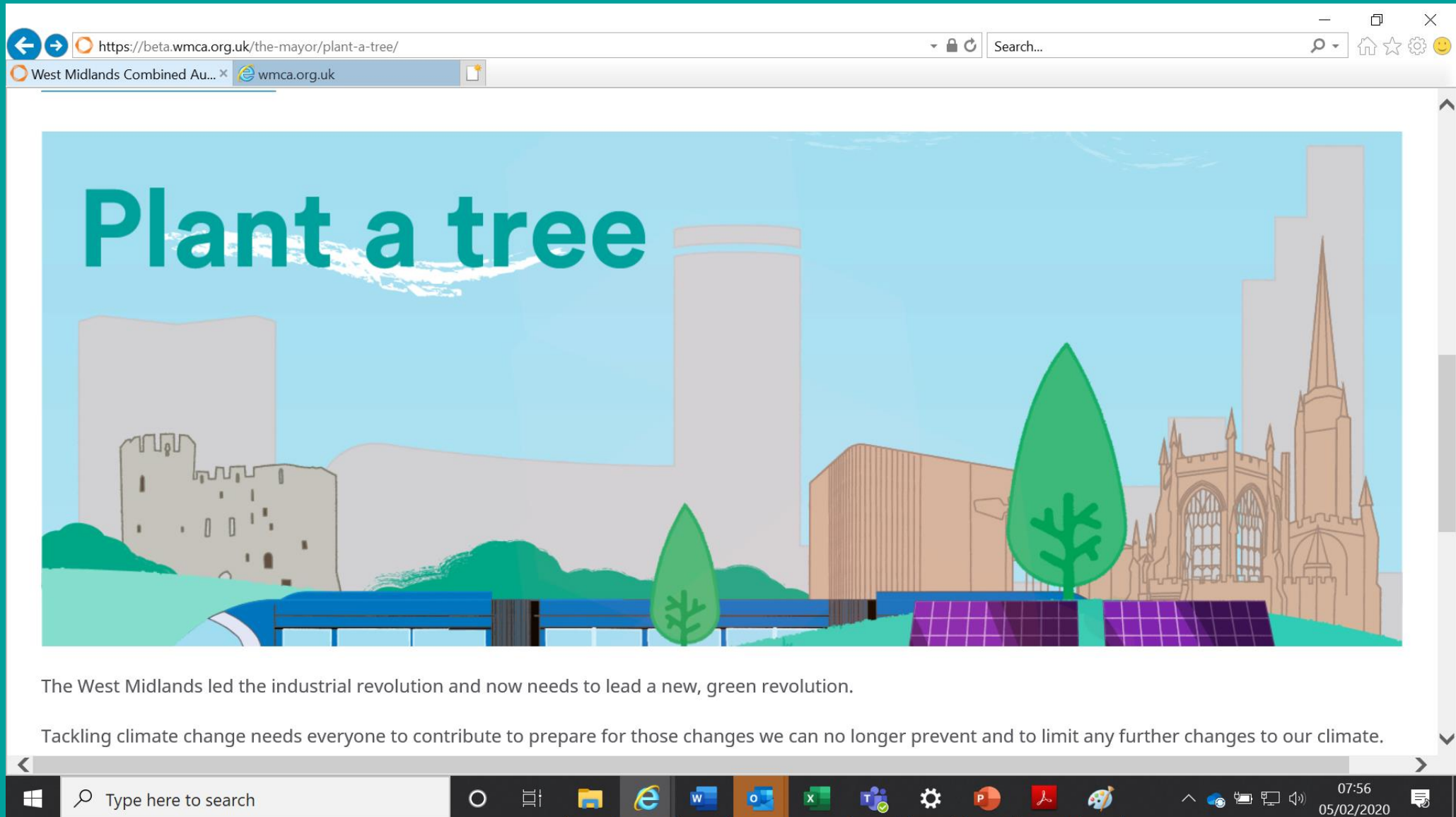


Ten Policy Priorities

1. *Active travel and cleaner transport* – including incentives to adopt low emitting modes
2. Infrastructure to support the transition to *electric charging* at scale in the region.
3. The transition to more *eco-friendly homes*, including a West Midlands ‘green deal’
4. Creating breathable places, including big ambitions for *tree planting*
5. The proposing of *behaviour change* campaigns at-scale, including on single-use plastics
6. Investment to support *re-skilling and employment* as a result of sector transitions
7. Incentives for business innovation, including ‘*clean growth challenges*’
8. Commitments we can make as ‘*anchor institutions*’ (as the public sector) within the region
9. Consideration of *new fiscal mechanisms* and *financial products* for investment
10. *Energy devolution* so that we can combine sustainability with reduced fuel poverty



EXAMPLE ACTIONS				
Using our industrial past to create a zero-carbon future				
First five years	Work with Government to improve National Planning Policy Framework	WMCA and Councils explore introduction of zero carbon standard for new builds	Regional Design Guide principles to be applied to new developments	Develop a regional investment plan for renewable heating and cooling
	Partner with Cemex and other industry partners to create low carbon cement supply chain	Develop other industrial symbiosis solutions for key infrastructure	'Sprint' bus rapid transit routes	Explore potential of fiscal levers to manage demand and invest in sustainable infrastructure
	New Metro Lines	Approve strategy for electric car charging infrastructure	Google partnership on Environmental Insights Explorer	Reallocate highway space to walking, cycling and mass transit
	Increased suburban rail and park and ride capacity at train stations	Evaluate the impact of potential bus regulation on climate impact	Accelerated transition of buses to low carbon, low pollution variants	Deliver first tranche of Better Streets Fund
Between five and fifteen years	Councils to use licensing to migrate all taxis to electric cars	Deliver at least one 'electric bus town' with Government investment	Use smart technology to help people save time and energy	Birmingham Airport commits to net zero carbon and is on track for 2041



← → <https://beta.wmca.org.uk/the-mayor/plant-a-tree/> Search...
West Midlands Combined Au... × [wmca.org.uk](https://beta.wmca.org.uk/the-mayor/plant-a-tree/)

Plant a tree

The West Midlands led the industrial revolution and now needs to lead a new, green revolution.

Tackling climate change needs everyone to contribute to prepare for those changes we can no longer prevent and to limit any further changes to our climate.

Windows taskbar: Type here to search, File Explorer, Edge, Word, Outlook, Excel, Teams, Settings, PowerPoint, Adobe Reader, Paint, System tray (07:56, 05/02/2020)



West Midlands Combined Authority

jacqueline.homan@wmca.org.uk

wm2041@wmca.org.uk

wmca.org.uk/climatechange

